

APPENDIX F

Project Handout and Comment Form



TRAILS AND TRANSIT FACILITIES PROJECT FACT SHEET

WHAT IS THIS PROJECT?

The goal of this project is to develop the potential for Alpine and Nordic skiing as well as summer hiking, mountain biking, and other recreational opportunities at Hatcher Pass. Hatcher Pass' potential as a high-quality recreation area for south central Alaska has been recognized for decades. Development of ski and recreation facilities at Hatcher Pass could also provide a substantial economic development opportunity to the Matanuska-Susitna Borough (MSB) by bringing new jobs, a new industry, and infrastructure improvements that could help attract other development.

WHAT WILL BE INCLUDED IN THIS PROJECT?

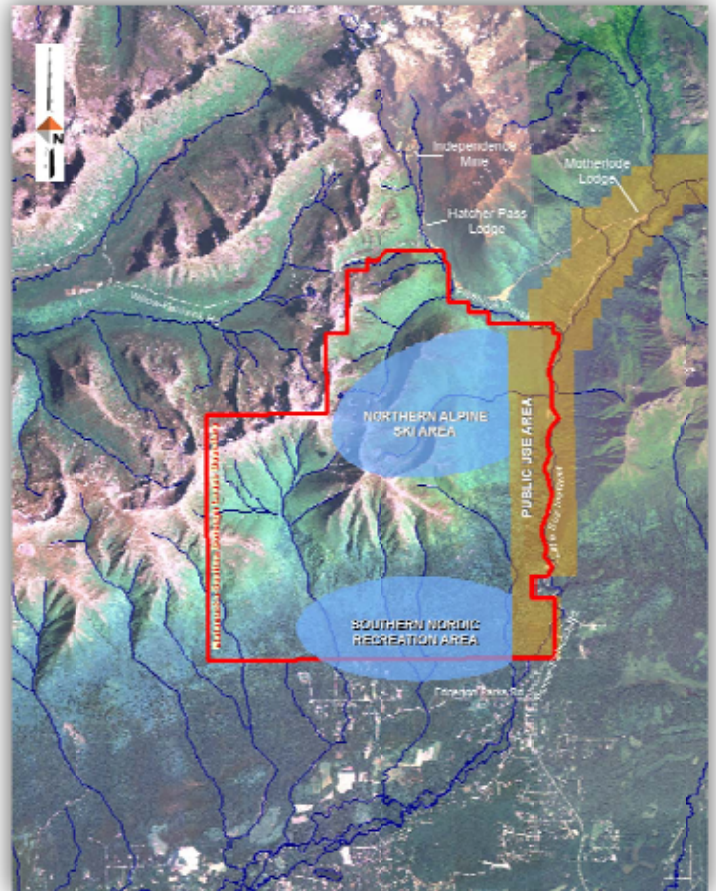
The MSB is proposing to develop both Alpine and Nordic skiing facilities at Hatcher Pass. The development currently proposed in the northern project area includes two ski lifts, a day use lodge, improvements to an existing pioneer road and parking area, and transit facilities. Improvements proposed in the southern area include Nordic ski trails, a chalet, a new access road that connects to Edgerton Parks Road, a new parking area, and transit facilities.

WHERE IS THE FUNDING COMING FROM?

The MSB is receiving federal funding from the Federal Transit Administration (FTA) for development of road improvements, parking areas, transit facilities for MASCOT service, and trails to support the ski area development. The MSB and the FTA are currently preparing an Environmental Impact Statement (EIS) to evaluate the potential impacts associated with these transportation improvements. The MSB is seeking additional funding sources for the other components of the project, such as ski lifts and chalets.

PURPOSE

The preliminary purpose of this project is to provide transportation access and transit facilities in support of proposed new recreational areas in Hatcher Pass, Alaska.



NEED

This project will address the lack of existing transportation access, pedestrian amenities and trails, and transit facilities to accommodate the proposed development.

WHAT IS SCOPING?

The scoping process allows the public to provide input on the project – including the purpose and need, alternatives to components of the project and environmental resources or concerns.

Public scoping comments will be accepted on the project through January 16, 2009.

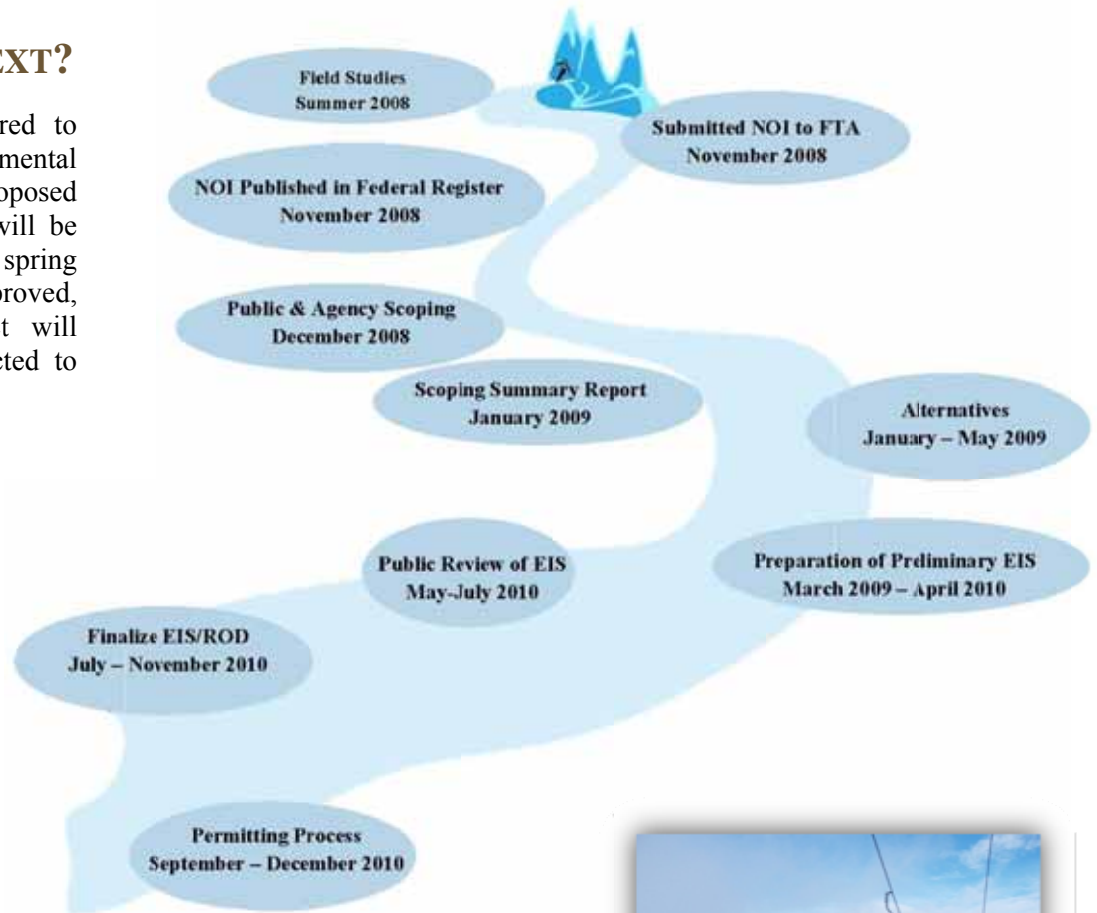
Additional information on the project is available on the website at:

www.hatcherpass.com



WHAT HAPPENS NEXT?

A draft EIS will be prepared to document potential environmental impacts from the proposed alternatives. The draft EIS will be available to the public in spring 2010. Once the EIS is approved, final design of the project will begin. Construction is expected to commence in spring 2011.



HOW CAN I STAY INVOLVED THROUGH THE DEVELOPMENT PROCESS?

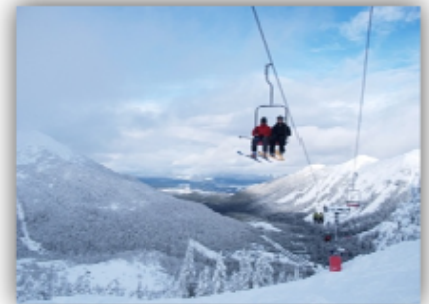
Project staff will present information to the MSB Assembly, local boards and commissions, community councils and other interested groups throughout the environmental study process. In addition, a public meeting will also be held to review the draft EIS in spring 2010. The www.hatcherpass.com website will contain all of the studies, fact sheets, newsletters, presentations, meeting notes and other information related to this project. E-mail updates and newsletters will also be sent to the project mailing list on a regular basis. You can request to be added to the project mailing list via the website or by contacting a member of the project team. Those who sign-in at this public meeting will automatically be added to the project mailing list.

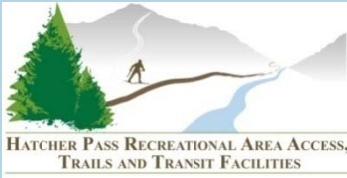
TO SUBMIT COMMENTS OR CONTACT THE PROJECT TEAM:

Kristi Stuller - DOWL HKM

809 S. Chugach Street ■ Palmer, AK 99645

Fax to Kristi at 907-563-3953 E-mail to hatcherpass@dowl.com



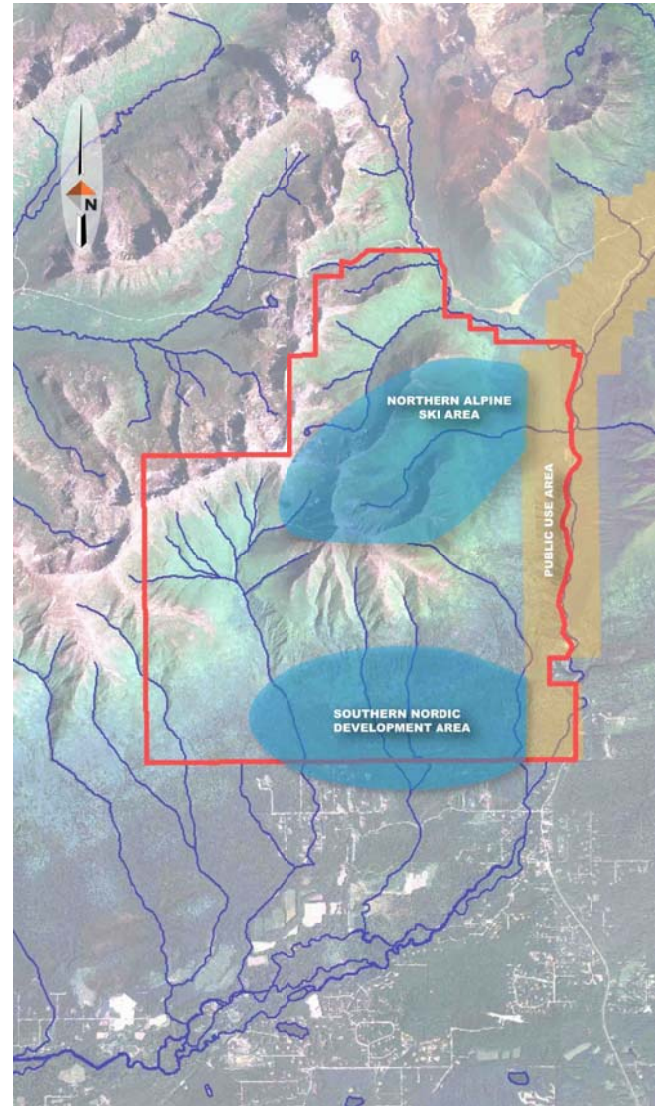


COMMENT FORM

PROJECT DESCRIPTION

The Matanuska-Susitna Borough (MSB) is embarking on a campaign to develop Hatcher Pass's great potential for Alpine and Nordic skiing as well as summer hiking, mountain biking, and other recreational opportunities. MSB residents have long understood that Hatcher Pass has the potential to be developed as a high-quality ski and recreation area for local residents and visitors. Development of ski and recreation facilities at Hatcher Pass could provide a substantial economic development opportunity to the MSB by bringing jobs, a new industry and infrastructure improvements that could help attract other development.

The MSB has received federal funding from the Federal Transit Administration (FTA) to design and construct transit and transportation facilities at Hatcher Pass, including bus pullouts for MASCOT Service, parking areas, road improvements and trails. The MSB is currently preparing an Environmental Impact Statement to evaluate the potential impacts associated with these transportation improvements.



COMMENTS

Your comments on the points listed below will help us prepare the environmental documentation for the Hatcher Pass Ski Area, Access and Transit Improvements Project.

- ▶ The purpose and need for the project
- ▶ The current plan for development
- ▶ Information on current uses of the area or environmental resources
- ▶ Concerns about impacts to social or environmental resources
- ▶ Other projects that could affect this area or the purpose for the project
- ▶ Any other information on the need for the project or the project area
- ▶ Is there anything we may be overlooking?

Don't feel you have to limit your comments to these bullets. Remember, if you have an opinion let us know your reasons as this will help us to understand your thoughts better. We appreciate your time and interest in the project.

PROJECT INFORMATION

Additional information on the project is available on the website at www.hatcherpass.com.

Public scoping comments will be accepted on the project through January 16, 2009.



