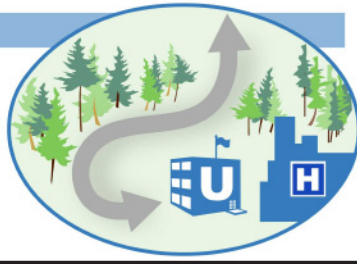


## ► Northern Access to U-Med District



# Project Update

November 2009

## What is this project about?

The Alaska Department of Transportation and Public Facilities (DOT&PF) is preparing a reconnaissance study to evaluate potential improvements to U-Med district access from the north and east. A reconnaissance study is an early phase of project development that identifies and evaluates an array of reasonable and feasible alternatives. The study leads to a determination of project viability and recommends a path for future project development.

## Why is DOT&PF looking at this project?

The Long Range Transportation Plan (LRTP) for the Anchorage Bowl showed that traffic levels in and around the U-Med district will exceed the capacity of the road system in the future. The demand for access into and out of the U-Med district is expected to be two or three times the current traffic levels by 2030.

## What has been done so far?

The project team has met with representatives of the U-Med institutions and gathered information on where employees, patients and students live. This data is being used to model the demand for access from various parts of Anchorage. The project team has also collected field data on wetlands and investigated the potential for impacts to historic resources and involvement of contaminated sites.

## What are the options for addressing access needs?

Three primary options for improving the movement of people and goods into the U-Med district are being considered. A combination of the three options or a no action alternative (no-build) is also a possibility.

### Decrease Traffic Demand

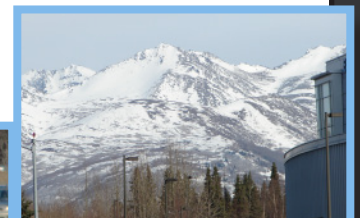
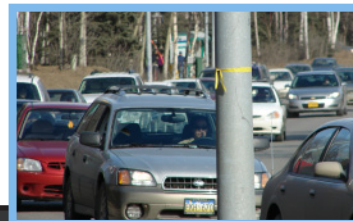
- Restrict driving/parking on campus
- Provide alternatives to vehicular travel in the district (e.g., transit or bicycle trails)
- Limit future expansion in the area
- Adjust employee shift changes to off-peak periods

### Improve Existing Roadways

- Expand UAA Drive
- Expand Lake Otis Parkway and 36th Avenue
- Expand Boniface Parkway and Tudor Road
- Northern Lights Boulevard capacity upgrades

### Construct New Access

- Construct new vehicular access from Northern Lights Boulevard
- Construct new transit access
- Construct new pedestrian and bicycle access
- Add a park and ride facility



## How will the options be evaluated?

DOT&PF will evaluate the various options based on the following criteria:

- Purpose & Need
- Trail Impacts
- Wetlands
- Parks
- Noise, Vibration and Air Quality Impacts
- Master Plan Consistency
- Technical Feasibility
- Short vs. Long Term Solution
- Estimated Construction Cost

Once this analysis is completed, a draft report will be released to the public for review and comment.

## Common Public Comment Themes

The undeveloped portions of UAA and APU provide very popular recreation trails and open space for local residents. Important cross-town and recreational trails pass through this area.

The project should consider elevated trail crossings.

Additional access is needed as the area is growing and traffic is already congested.



Interest in investigating alternative transportation measures.

Concerns about the long-term developability of the UAA and APU campuses.

The new access corridors could adversely impact the character of the campuses.

## U-Med Green District

The U-Med district is the first green district in Anchorage. The U-Med Green District is looking at ways to reduce the environmental footprint of operations in the district, including the potential to reduce traffic and the need for more parking.

A summary of all the public comments received is available on the web site at [www.umednorthernaccess.com](http://www.umednorthernaccess.com).

## Contact Us

For questions or more information contact:

Michela Spitz  
Public Involvement Coordinator  
DOWL HKM  
4041 B Street  
Anchorage, AK 99507

[umednorthernaccess@dowlhkm.com](mailto:umednorthernaccess@dowlhkm.com)  
907.562.2000

[www.umednorthernaccess.com](http://www.umednorthernaccess.com)